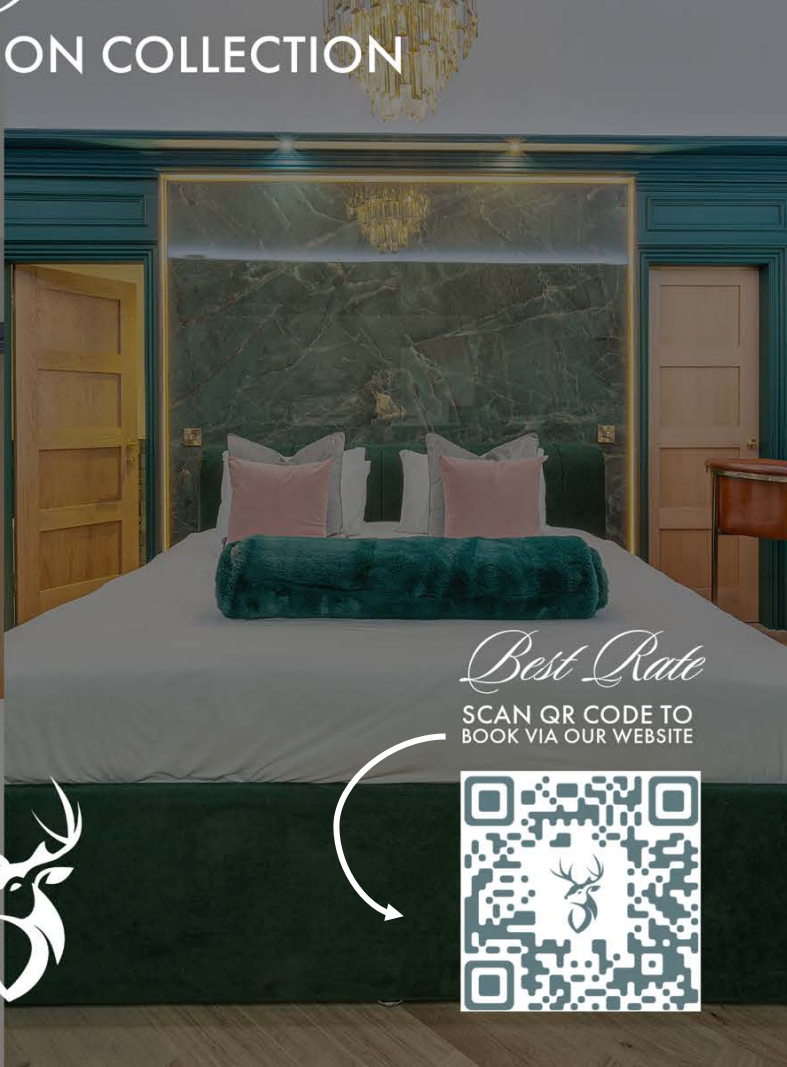




*Enterkine Country House Resort*  
ACCOMMODATION COLLECTION



*Best Rate*

SCAN QR CODE TO  
BOOK VIA OUR WEBSITE





# *The Enterkine Country House Resort*

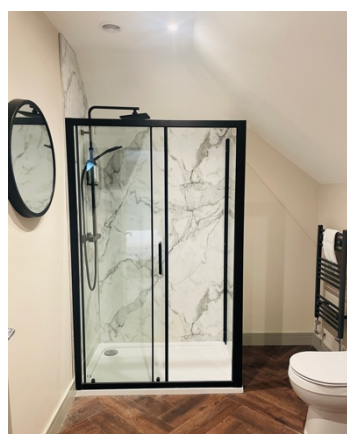
The original Country House built in the late 1930's to the highest specification by Mr William S Houston, now respectfully refurbished with a modern twist, provides three types of luxurious accommodation to enjoy. All our rooms have the benefit of easy access to our 'River View Restaurant & Bar' where you can indulge in our menu whilst enjoying a refreshment from the bar – if whisky is your thing, why not sip away on the true taste of Scotland within our Glenfiddich Whisky Library

Our five stunning Deluxe Rooms all have their own unique features with everything you require for a cosy and relaxing break or if you're looking for the best of Enterkine, our two stunning Superior Rooms boast incredible countryside views with 'The Enterkine', proudly showcasing a large balcony looking over the estate and our popular 'Oval' room featuring a relaxing, free standing jacuzzi bath.

Our seven Rooftop Standard Rooms have recently been renovated and include stylish finish, en-suite, and views across the estate.

**Rooftop Standard £155 | Deluxe £175 | Superior £199 per night | \*PLEASE NOTE PRICES ARE SUBJECT TO CHANGE. CHECK WEBSITE OR WITH OUR TEAM FOR LATEST PRICE. THIS APPLIES TO ALL RESORT ACCOMODATION FEATURED.**

*#yestoenterkine*

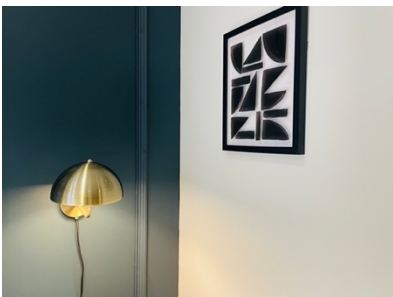


# *The Byre at Enterkine Country House Resort*

The Byre is a stunning, cosy, and modern two bedroom converted cottage with small kitchenette based only two minutes walk from the main hotel. The terrace, garden area boasts views across the estate and with a hot tub to enjoy - It's the ideal location at Enterkine Resort.

£500 per night | £400 per subsequent night

*#yestoenterkine*





# *The Gatehouse at Enterkine Country House Resort*

Positioned at the resort entrance, the Gatehouse is one of our most popular, luxury accommodation options for you to enjoy. The charming and historic Gatehouse boasts four bedrooms, large open plan family, kitchen, and dining space with all the home comforts you will need for a relaxing self-catering stay - although the hotel is a short drive or walk away where you can enjoy delicious food and beverage from the 'River View Restaurant & Bar'. In addition to enjoying indoors, the outdoor decking area has incredible rustic views with a hot tub to relax or lounge in – maybe even enjoy a glass of fizz beneath the stars.

The Gatehouse is a stunning retreat that comfortably sleeps 10 and is the ideal escape from the hustle and bustle of everyday life to the stunning Ayrshire Countryside to enjoy quality time with your family and friends.

£800 per night | £600 per subsequent night

*#yestoenterkine*

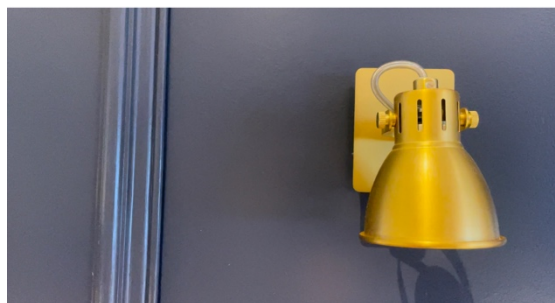


# *The Kirk House at Enterkine Country House Resort*

Country living with a modern, contemporary twist at Enterkine Resort. Introducing our newly refurbished 'Kirk House', ideally situated within two minutes walk from the main hotel, the converted farmhouse boasts seven stunning en-suite double bedrooms and is the perfect option for a family gathering, wedding accommodation or golfing group.

From £145 per night |

*#yes2enterkine*





# Wooden Lodges at Enterkine Country House Resort

Step inside one of our Woodland Lodges and relax in the tranquil setting of the countryside. Book a table for dinner in the River View Restaurant, enjoy a walk in our grounds and have an evening drink in our fully stocked bar. Perfect for anniversaries, special occasions, and a romantic break with your loved one. Sit outside in the evening with a glass of wine and look up at the stars or enjoy a dip in the hot tub.

Cedar – without Hot Tub | Oak & Beech with Hot Tub

From £199 per night | (each lodge sleeps 2 people) \*HotTub Lodges £275 p/n

*#yestoenterkine*



# *The Woodside at Enterkine Country House Resort*

Introducing, 'The Woodside' our latest addition to the resort accommodation portfolio that represents a new stage of our sustainable development on the estate. The luxurious new build boasts, two-bedroom, en-suite with a large, stunning central living area with direct access to the modern landscaped back garden with Hot Tub - ideal to enjoy throughout the seasons. Only two minutes walk from the main hotel and with parking available at the front of the fully accessible cottage - It's the ideal retreat for up to six people.

£500 per night |

*#yesloenterkine*





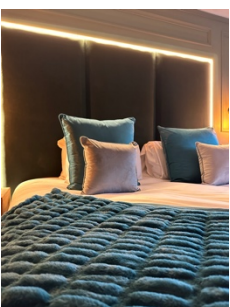
# *Bluebell Lodge at Enterkine Country House Resort*

Our latest addition to the resort accommodation portfolio is the cosy and modern Bluebell Lodge. Located a short stroll from the main hotel, the Bluebell lodge is the ideal retreat. Beautifully decorated with King Bed, Shower Room, TV, Tea/ Coffee facilities, Iron, Hairdryer, and seating area with stunning bay window overlooking the estate. Breakfast also included and served in the River View Restaurant & Bar.

Book a table for dinner in the River View Restaurant, enjoy a walk in our grounds and have an evening drink in our fully stocked bar. Perfect for anniversaries, special occasions, and a romantic break with your loved one.

£199 per night | (Lodge sleeps 2 people)

*#yes2enterkine*





EXPLORE

*Enterkine Country House Resort*

